

**WARNING / ATTENZIONE:**  
 Angle valves WITHOUT schrader  
 Rubinetti ad angolo SENZA schrader

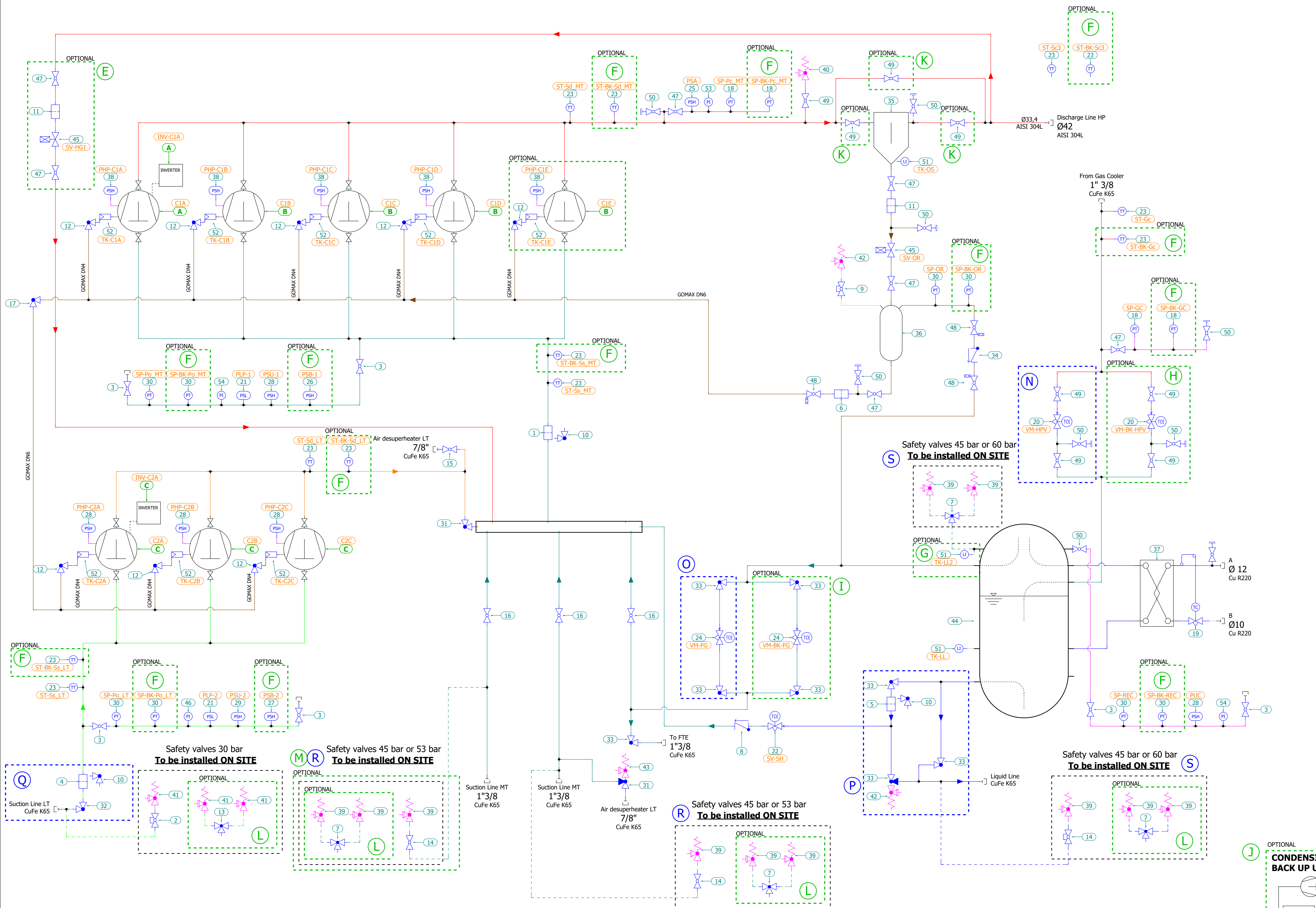
**ANGLE VALVE POSITION**

During the operation of the pack, angle valves with safety device must be completely open.

Durante il funzionamento della centrale i rubinetti ad angolo con valvola di sicurezza devono essere completamente aperti.

**BILL OF MATERIALS**

LABEL NUM.	DESCRIPTION
1	Filter
2	Ball Shut-Off Valve For Safety Valve
3	Shut Off Valve
4	Filter
5	Filter
6	Filter
7	Changeover Devices For Safety Valve
8	Check Valve
9	Ball Shut-Off Valve For Safety Valve
10	Angle Valve
11	Filter
12	Angle Valve
13	Changeover Devices For Safety Valve
14	Ball Shut-Off Valve For Safety Valve
15	Shut Off Valve
16	Shut Off Valve
17	Angle Valve
18	Pressure Transducer
19	Thermostatic Valve
20	Expansion Valve
21	Pressure Switch
22	Expansion Valve
23	Temperature Transducer
24	Expansion Valve
25	Pressure Switch
26	Pressure Switch
27	Pressure Switch
28	Pressure Switch
29	Pressure Switch
30	Pressure Transducer
31	Angle Valve
32	Angle Valve
33	Angle Valve
34	Differential Valve
35	Oil Separator
36	Oil Reserve
37	Exchanger
38	Pressure Switch
39	Safety Valve
40	Safety Valve
41	Safety Valve
42	Safety Valve
43	Safety Valve
44	Liquid Receiver 200 ft
45	Solenoid
46	Gauge
47	Shut Off Valve
48	Ball Shut-Off Valve For Safety Valve
49	Shut Off Valve
50	Shut Off Valve
51	Level Sensor
52	Oil Regulator
54	Gauge
55	Gauge



A	MT COMPRESSOR MODEL	DANFOSS INVERTER MODEL (IP20)
	COMPR. 4JTE-10K-40P	FC103 134F7676 24A/11kW/400V
	COMPR. 4HTE-15K-40P	FC103 134F7489 32A/15kW/400V
	COMPR. 4GTE-20K-40P	FC103 134F7678 44A/22kW/400V
	COMPR. 4FTE-20K-40P	FC103 134F7679 61A/30kW/400V
	COMPR. 4DTE-25K-40P	FC103 134F7680 73A/37kW/400V
	COMPR. 4CTE-30K-40P	FC103 134F7680 73A/37kW/400V

B	MT COMPRESSOR MODEL	DANFOSS INVERTER MODEL (IP20)
	COMPR. 4JTE-10K-40P (3-4X)	
	COMPR. 4HTE-15K-40P (3-4X)	
	COMPR. 4GTE-20K-40P (3-4X)	
	COMPR. 4FTE-20K-40P (3-4X)	
	COMPR. 4DTE-25K-40P (3-4X)	
	COMPR. 4CTE-30K-40P (3-4X)	

C	LT COMPRESSOR MODEL	DANFOSS INVERTER MODEL (IP20)
	COMPR. 2JSL-2K 40S (3X)	FC103 134F7669 7,2A/3KW/400V
	COMPR. 2HSL-3K 40S (3X)	FC103 134F7670 10A/4KW/400V
	COMPR. 2GSL-3K 40S (3X)	FC103 134F7665 13A/5,5KW/400V
	COMPR. 2FSL-4K 40S (3X)	FC103 134F7663 16A/7,5KW/400V
	COMPR. 2ESL-4K 40S (3X)	FC103 134F7676 24A/11KW/400V
	COMPR. 2DSL-5K 40S (3X)	
	COMPR. 2CSL-6K 40S (3X)	

OPTION	DESCRIPTION
-	HOT GAS BYPASS
F	BACKUP CONTROL
G	LIQUID LEVEL ALARM
H	BACKUP HPV VALVE
I	BACKUP FLASH GAS VALVE
J	BACKUP CONDENSING UNIT R134a
K	OIL SEPARATOR BYPASS
L	CHANGEOVER VALVE
M	SECOND SUCTION MT SAFETY VALVE

N	<b>HPV VALVE MODEL</b> See configuration document for details
O	<b>FLASH GAS VALVE MODEL</b> See configuration document for details
P	<b>LIQUID LINE</b> See configuration document for details
Q	<b>SUCTION LINE LT</b> See configuration document for details
R	<b>SUCTION MT SAFETY VALVE</b> See configuration document for details
S	<b>LIQUID LINE SAFETY VALVE</b> See configuration document for details

**DANFOSS CONTROLLER**

When both depicted, changeover safety valves available as an option in replacement of single safety valve LIQUID LINE, either 45BAR or 60BAR MT SUCTION LINE, either 45BAR or 53BAR

--- - - - - ( ) **ADDITIONAL DETAILS ON CONFIGURATION DOCUMENT**

--- - - - - ( ) **OPTION**

