

SkyExpo  
GranFit



The most  
invisible, the  
most visible



SkyExpo  
SkySet

# New life to the frozen department



## SkyExpo

Epta range that renews the frozen food department by increasing and optimizing the display possibilities.

Design, maximization of the food visibility, combined with great display volumes, flexibility and customization, are the peculiarities which characterize SkyExpo. Hence the possibility of creating sales formats which give uniqueness to the frozen food department of each store.



This information is confidential and was prepared by Epta solely for our internal use. It is not to be relied on by any third party without Epta prior written consent. Marketing 09/2020

SkyExpo  
SkySet

PRODUCT OVERVIEW



## Break out the traditional layout

The frozen food department tends to be organized according to schematic lay-outs with a strict division between horizontal and vertical food presentation.

**SkyExpo** are an invitation to break the mold by experimenting new formats combining the horizontal display in the chest and the vertical display, with the final aim of maximizing the store turnover.

The **family feeling** between **SkyExpo** and islands with the vertical **SkyLight** and the semi-vertical **SkyShine**, where the combination of design and essentiality emphasizes the presentation of frozen products, makes it possible to create refined, harmonious, pleasant and welcoming ambiances in stores of all sizes.



BACK TO SUMMARY

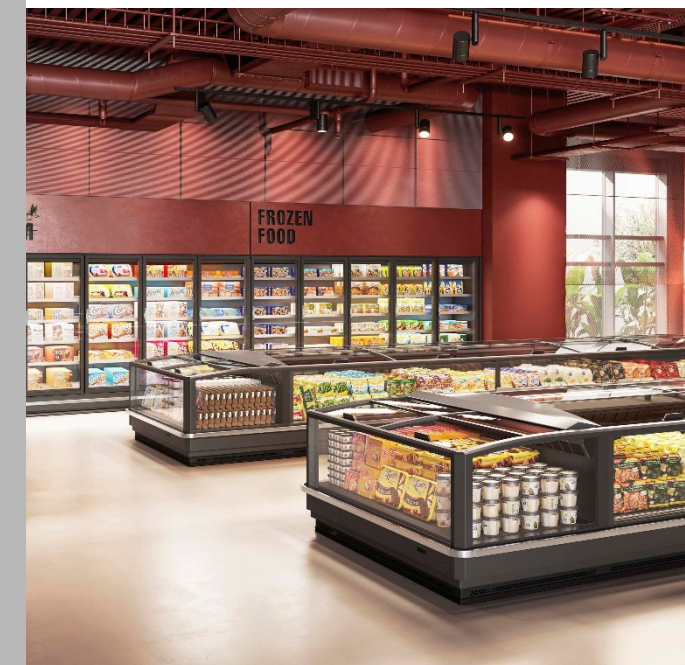


SkyExpo  
SkySet

PRODUCT OVERVIEW



This information is confidential and was prepared by Epta solely for our internal use.  
It is not to be relied on by any third party without Epta prior written consent. Marketing 09/2020



SkyExpo  
SkySet

PRODUCT OVERVIEW



This information is confidential and was prepared by Epta solely for our internal use. It is not to be relied on by any third party without Epta prior written consent. Marketing 09/2020

The most significant advantages compared to the previous range:

- Total glass effect: **100% of food displayed** is visible against 64% of Cosmos Perform
- Increase in the **food volumes** displayed: **+8,75%** vs Cosmos Perform 2000
- **Rounded End of Line** design for an enhanced harmony with the linear cabinets and to be more appealing for promotions
- Class **3L1** according to EN ISO23953-2 **at -29°C** evaporating temperature, as SkyLight
- Energy efficiency: **-24% SkyExpo L energy consumptions** vs Cosmos Perform 2000



## SkyExpo

**Total food visibility**  
and essential design to leave the stage to the goods and make the frozen department more attractive

**High display capacity**  
to maximize the ratio between food volumes displayed and footprint

**Great display flexibility**  
to adapt to different food categories and formats and to meet seasonal requirements



**Rounded End of Line**  
designed to emphasize the area dedicated to promotions

**Digitalization**  
integration of digital technologies to enhance cabinets functionalities, efficiency and user-friendliness

**Sustainability**  
performance and energy saving



BACK TO SUMMARY



This information is confidential and was prepared by Epta solely for our internal use. It is not to be relied on by any third party without Epta prior written consent. Marketing 09/2020

SkyExpo  
SkySet

PRODUCT OVERVIEW



# Overview

# Range & Offer

## SkyExpo V (Volum)

**Width:** 2020mm without bumper – 2110mm with s/steel bumper

**Lengths:** 1885-2500-3750mm linear, 2030mm end of line

**Covers:** 3 curved push glasses on linear, 2 curved push glasses on EOL

**Loading line:** 435mm linear, 400mm end of line

**Temperature class:** 3L1 for linear and end of line

3M1 by changing the set point on site

**Evaporating temperature:** -29°C.

**Lighting position:** without, rear and handrail (always both of them together)

**LED lighting:** Advance or Value

**Fluids :** R404A, R422D, R448A, R449A, R407A/C/F, R410A, R452A, CO<sub>2</sub>

**Controllers:** Carel, Danfoss, Dixell, Eliwell, Wurm

**Controllers position:** single side or double side display

**Defrost:** electrical

**Electronics:** SwitchON

**Endwall:** panoramic with bumper or without bumper

**Bumpers:** brushed stainless steel 60x20mm (Advance aesthetics)

**Aesthetics, lids frame, silkscreens, corners:** Dark grey (RAL 7016) or Light Grey (RAL 7035)

**Accessories:** tiltable wired grids, dividers, ticket holders

Energy Class



**Advance aesthetics**



**Value aesthetics**



BACK TO SUMMARY



SkyExpo  
SkySet

PRODUCT OVERVIEW



This information is confidential and was prepared by Epta solely for our internal use. It is not to be relied on by any third party without Epta prior written consent. Marketing 09/2020

# Overview

# Range & Offer

## SkyExpo M (Modular)

**Width:** 1680mm without bumper – 1770mm with s/steel bumper

**Lengths:** 1885-2500-3750mm linear, 1690mm end of line

**Covers:** 3 curved push glasses on linear, 2 curved push glasses on EOL

**Loading line:** 435mm linear, 400mm End of line

**Temperature class:** 3L1 for linear and end of line

3M1 by changing the set point on site

**Evaporating temperature:** -29°C

**Lighting position:** without, rear and handrail (always both)

**LED lighting:** Advance or Value

**Fluids :** R404A, R422D, R448A, R449A, R407A/C/F, R410A, R452A, CO<sub>2</sub>

**Controllers:** Carel, Danfoss, Dixell, Eliwell, Wurm

**Controllers position:** single side or double side display

**Defrost:** electrical

**Electronics:** SwitcON

**Endwall:** panoramic with bumper or without bumper

**Bumpers:** brushed stainless steel 60X20mm (Advance aesthetics)

**Aesthetics, lids frame, silkscreens, corners:** Dark grey (RAL 7016) or Light Grey (RAL 7035)

**Accessories:** tiltable wired grids, dividers, ticket holders

Energy Class



### Advance aesthetics



### Value aesthetics



BACK TO SUMMARY



This information is confidential and was prepared by Epta solely for our internal use. It is not to be relied on by any third party without Epta prior written consent. Marketing 09/2020

SkyExpo  
SkySet

PRODUCT OVERVIEW







[www.bonnetneve.com](http://www.bonnetneve.com)



Bonnet  
Névé



Epta S.p.A. participates in the ECC programme for:  
Refrigerated display cabinets (RDC); Check ongoing validity  
of certificate online: [www.eurovent-certification.com](http://www.eurovent-certification.com)